

St Cuthbert's Catholic  
Primary School



Child-friendly SEND Policy

Date: September 2023

## Contents

### The school's promise

1. What is SEND?
2. Things we look out for
3. How we will help pupils with SEND
4. When we will talk to pupils and their parents
5. Help with learning
6. Keeping happy and healthy
7. Privacy
8. Policy review

## The school's promise

Here at St Cuthbert's we care about all of our pupils and we always want you to feel happy and healthy at school. To make sure this happens, we have created this policy which tells you how we will offer you support, who you can talk to if you have problems and how we can work together to help you learn and enjoy school.



Signed by:

Ms Shepherd

SENDCO

Mr Dillon

Headteacher

Mrs Glen-Ravenhill

Chair of governors

## 1. What is SEND?

SEND stands for **S**pecial **E**ducational **N**eeds and **D**isabilities.

It is a word used in schools to describe a pupil who struggles with learning and sometimes needs extra help from teachers and classroom staff.

It is also used to describe a pupil who has a problem with their health or who has a disability which makes it difficult for them to learn or use things in the classroom that other people may find easy to use.

If a pupil has SEND, they may find their day-to-day tasks a challenge.

Just like with everyone, people with SEND are unique and their needs and disabilities will differ. Some people may struggle with understanding what is being said to them, speaking clearly and talking with others.

Other people may struggle with understanding how themselves and others feel, or they may get very worried in situations which seem easy for others to deal with, such as playing in the playground.

People with SEND may also struggle with their senses or physical needs, for example, they may not be able to walk or might not be able to hold objects well.



There are many different ways a pupil can struggle, but what is important to remember is that they should not be treated unfairly or made to feel alone or unwanted because of their SEND.

## 2. Things we look out for

If you have SEND, you might have already been told by a grown-up, for example, your families or a doctor or teacher. It is the school's job to make sure that, if you have SEND, you are looked after and can still join in activities. That is why teachers and other staff will be trained to spot signs of SEND and give help where needed. Teachers will also try to change the lesson for you to make sure you can always be included.

If a pupil struggles a lot more than their friends to learn new things, they may have SEND. Pupils who might have SEND will be assessed by a grown-

up to make sure they get the right help. The school will try and help pupils with SEND as soon as possible.

**Remember, it is not a bad thing to have SEND and you should never feel embarrassed.**

### **3. How we will help pupils with SEND**

Teachers are here to help all pupils but there are things they will do to help pupils with SEND. These include:

- Making plans and keeping track of the help given to pupils with SEND
- Talking to the parents of pupils with SEND to make sure the help in place is suitable
- Setting challenging targets for pupils with SEND to help them achieve their best
- Knowing the needs of all pupils and the special help that is in place to help pupils with SEND

Other members of staff in school will work closely with your families and other grown-ups to help you make the most of your time in school and enjoy as many new things as possible.

Help may be given in the classroom, at break time and lunchtime, and will be different for each pupil.

The school will always talk to you to see if you like the extra help you are getting and whether there is anything you would like to change – it is important that you are honest when you have these chats and make sure someone knows how you really feel.

The school will also work closely with experts to see if you need something called an Education Health and Care (EHC) plan. This plan has your difficulties written on it, the help you need and other important information. You will be part of making the plan with your families and your needs and wishes will be listened to. You will get a member of staff at the school to help you when you need support. That member of staff will understand your needs and make sure you are looked after at all times.

#### 4. When we will talk to pupils and their families/carers

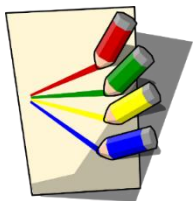
It is really important that we talk to your families/carer so that we know how to properly help you. Every pupil is unique, and the help given to them is too. We will make sure that the help given in school can be carried on at home, so that you never feel neglected or unable to do something.



#### 5. Help with learning (Targets or “Support Plans”)

Pupils with SEND will be helped in all learning environments. The school will make sure that your SEND does not prevent you from doing your best. Every lesson will be designed so that **everyone** can join in.

Your support plan will show where your strengths are and the areas which are a challenge for you. It will also give you the opportunity to show your interests and tell your teacher what you want to achieve in the future.



You will set targets with your teacher and these targets will be checked **three** times a year. If you reach your targets, new ones will be set.

You will get help with any tests or assessments where needed and, if your needs change, the school will meet with you and your families/carers to make a new support plan.

#### 6. Keeping happy and healthy

Our school includes everyone in activities, and we want each one of our pupils to be happy and healthy. We will make sure you are happy in your lessons and will tell you who you can talk to if you have a problem or feel upset.

All pupils with SEND should feel able to talk about any concerns they may have and there are many adults in school if you need to talk. Never forget your teachers, helpers as well as Mr Dillon and Mrs Cottiss are always there to listen to you. You can talk about any problems you have either with your school work or how you feel.

If you are struggling with your lessons, you will get time outside the classroom with a helper – you may also get one-to-one support with a grown-up to help you understand your emotions and feelings.

You will also get the chance for your parents to join you in some of the help you get. This will be your choice unless a doctor or other professional thinks it would be best for you to have them there.

## **7. Privacy**

The information the school holds about you is private, and we will only tell people your information if we have to by law. There are laws stopping the school from sharing information without telling you or your parents first. This means you can be sure that only the people who need to know about your SEND are told about your needs.

## **8. Policy review**

- This policy will be updated yearly by the SENDCO.
- The next update for this document will be September 2024.
- The school will make sure you know of any changes to this policy.

